

Perfect
LINE*



Ergoplus

Pinze / Pliers

K1



Perfect Line PL-001 inserti TC
Tronchese Miniature per legature
Ø max .014"

*Miniature Cutter TC insert light ligature
and wire Ø max .014"*



Perfect Line PL-100
Pinza Angle a becco di uccello
LUNGA Ø max .028"

*Bird Beak plier Angle **LONG**
Ø max .028"*



Perfect Line PL-002 inserti TC
Tronchese Miniature per legature
Ø max .014" angolata 15°

*Miniature Cutter TC insert light
ligature and wire Ø max .014"
angled 15°*



Perfect Line PL-110
Pinza a becco di uccello Ø max 0.24"

Bird Beak plier Ø max 0.24"



Perfect Line PL-010 inserti TC
Tronchese per filo duro Ø max .028"

*Hard wire cutter TC with cut angle Ø
max .028"*



Perfect Line PL-120
Pinza a becco di uccello **CORTA** Ø max .028"

*Bird Beak plier **SHORT** Ø max .028"*



Perfect Line PL-011 inserti TC
Tronchese per filo duro Ø max .028"
angolata 15°

*Hard wire cutter TC with cut angle
Ø max .028", angled 15°*



Perfect Line PL-125
Pinza concava / convessa a becchi
stretti Ø max .016"

*Concave / convex plier with narrow
beaks Ø max .016"*



Perfect Line PL-015
Tronchese Heavy-Duty Cutter Ø max
.042"

Heavy-Duty cutter hard wire Ø max .042"



Perfect Line PL-140
Pinza di Aderer a 3 becchi Ø max .024"
(mm 120) **PUNTA LUNGA**

*Aderer plier 3 beaks **LONG** tip
Ø max .024" (mm 120)*



Perfect Line PL-020 inserti TC
Tronchese per legature Ø max .020"

*Ligature cutter TC insert hard wire Ø
max .020"*



Perfect Line PL-145
Pinza di Aderer a 3 becchi Ø max .024"

*Aderer plier 3 beaks short tip
Ø max .024"*



Perfect Line PL-040 inserti TC
Tronchese Distale con trattenuta filo
Ø max .021" x .025"

*Distal end cutter, safety hold TC
Ø max .021" x .025"*



Perfect Line PL-150
Pinza di Nance Ø max .028"

Nance plier Ø max .028"



Perfect Line PL-045 inserti TC
Tronchese Distale con trattenuta filo
MANICO LUNGO Ø max .021" x .025"

*Distal end cutter safety hold TC
Ø max .021" x .025" **LONG HANDLE***



Perfect Line PL-160
Pinza Tweed
Ø max .021" x .028" **PUNTA LUNGA**

*Tweed plier **LONG TIP**
Ø max .021" x .028"*



Perfect Line PL-080
Pinza di Adams Ø max .028"

Adam's plier Ø max .028"



Perfect Line PL-165
Pinza Tweed Ø max .021" x .028"
PUNTA CORTA

*Tweed plier **SHORT TIP**
Ø max .021" x .028"*



Perfect Line PL-090
Pinza Angle a becco di uccello **CORTA**
Ø max .028"

*Bird Beak plier Angle **SHORT**
Ø max .028"*



Perfect Line PL-170
Pinza per archi linguiali Ø max .028"

Lingual arch plier Ø max .028"





Perfect Line PL-175
Pinza di Nance per formare ganci di Adams e piccoli stop da laboratorio
Laboratory Adams clasp forming plier Nance style



Perfect Line PL-290
Pinza per Omega Loop Ø max .028"
Omega Loop plier Ø max .028"



Perfect Line PL-180
Pinza De la Rosa concava / convessa Ø max .020"
BECCO CON SCANALATURE
De la Rosa plier concave / convex Ø max .020"



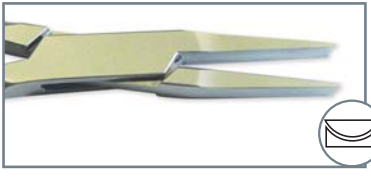
Perfect Line PL-300
Pinzetta di Young Ø max .020"
Young plier Ø max .020"



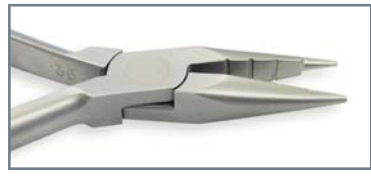
Perfect Line PL-190
Pinza De la Rosa concava / convessa Ø max .020" **BECCO LISCIO**
De la Rosa plier concave / convex smooth beaks Ø max .020"



Perfect Line PL-330
Pinza per formare angoli retti su fili in nickel, titanio e acciaio Ø max .028"
Plier for right angles (Ni-Ti and steel wires) Ø max .028"



Perfect Line PL-195
Pinza di Hollow Chop concava / convessa
Concave / convex Hollow Chop Plier



Perfect Line PL-340
Pinza Jarabak Ø max .024"
Jarabak plier Ø max .024"



Perfect Line PL-200
Pinza togli bande
Band remover plier with pads



Perfect Line PL-350
Pinza per formare stop a "V" Ø max .024"
Plier for "V" stop Ø max .024"



Perfect Line PL-220
Pinza togli brackets
PUNTA STRETTA
Brackets remover plier NARROW TIP



Perfect Line PL-360
Pinza per separatori
Separator plier



Perfect Line PL-225
Pinza togli brackets **CURVA**
Brackets remover plier CURVED



Perfect Line PL-370
Strumento per la piegatura distale degli archi Ø max .022"
Distal plier for arches Ø max .022"



Perfect Line PL-250
Pinza Weingart Ø max .020"
Weingart plier Ø max .020"



Perfect Line PL-510 inserti TC
Pinza Universale
UNIVERSAL plier (classic)



Perfect Line PL-265
Pinza di How curva Ø max .028"
PUNTA CORTA
How curved plier SHORT TIP Ø max .028"



Perfect Line PL-580
Pinza di Mathieu per legature
Mathieu ligature positioner



Perfect Line PL-275
Pinza di How dritta Ø max 0.28"
PUNTA CORTA
How straight plier SHORT TIP Ø max 0.28"



Perfect Line PL-633
Pinza per Grippare ganci chirurgici
Surgical hook Crimping Plier



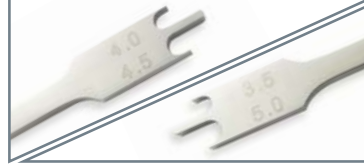
Perfect Line PL-640
Pinzetta dritta per attacchi
Brackets straight plier



Perfect Line PL-755
Spingibande - Sterilizzabile a caldo
(puno di contatto in teflon)
*Heat sterilizable band carrier
(Teflon contact point)*



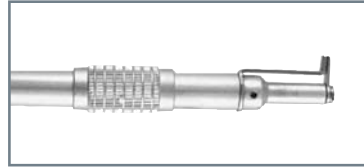
Perfect Line PL-650
Mosquito
Mosquito Hemostat



Perfect Line PL-780/785
Altimetro per brackets (Alluminio)
Altimeter for brackets (Aluminium)
Ø max .018" (PL-780)
Ø max .022" (PL-785)



Perfect Line PL-660
Pinzetta per posizionare tubi
Tubes positioner plier



Perfect Line PL-790
Strumento per posizionare brackets e tubi
Posterior bond placer



Perfect Line PL-680
Applicatore per legature elastiche
Elastic ligatures positioner



Perfect Line AFTR200
Torretta per formare archi
Torque O
*Arch forming Turret
without Torque*



Perfect Line PL-690
Strumento di utilità
Utility instrument



Perfect Line DIGICALIP
Calibro Digitale
Digital Gauge



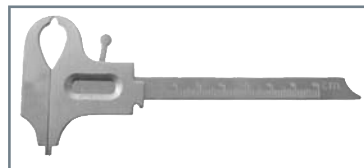
Perfect Line PL-700
Direzionatore per legature
Orthodontic instrument for ligatures



Perfect Line PL-810
Calibro Digitale
Digital Gauge



Perfect Line PL-740
Altimetro per brackets
Brackets altimeter



Perfect Line PL-870
Calibro Boley
Boley Gauge



Perfect Line PL-750
Spingibande - Sterilizzabile a caldo
Heat sterilizable band carrier



Perfect Line ZDGL10
Altimetro con graffite
misure 3.5 - 4 - 4.5 - 5 mm
*Zand Gauge
measures 3.5 - 4 - 4.5 - 5 mm*

Ergoplus



Ergoplus EI-001 inserti TC
Mini tronchese per legature e fili leggeri.
Miniature Cutter TC insert light ligature and wire



Ergoplus EI-130
Pinza Tweed per formare loop
Tweed's plier for loop



Ergoplus EI-010
Tronchese per filo duro Ø max .020"
Hard wire cutter TC with Ø max .020"



Ergoplus EI-140
Pinza di Aderer a 3 becchi
Aderer plier 3 beaks



Ergoplus EI-020 inserti TC
Tronchese per filo duro
Hard wire cutter TC



Ergoplus EI-150
Pinza di Nance per formare anse
Nance plier for dimpling



Ergoplus EI-040 inserti TC
Tronchese distale con trattenuta filo, a manici lunghi 14 cm
Long handle 14 cm



Ergoplus EI-160
Pinza Tweed per formare archi
PUNTA LUNGA 10mm
Tweed pliers LONG TIP for arches



Ergoplus EI-080
Pinza di Adams
Adam's plier



Ergoplus EI-170
Pinza per archi linguali
Lingual arch plier



Ergoplus EI-090
Pinza Angle a becco di uccello **CORTA**
Bird Beak plier Angle SHORT



Ergoplus EI-180
Pinza de la Rosa per formare e contornare archi
De la Rosa plier for arches shaping and contouring



Ergoplus EI-100
Pinza Angle a becco di uccello **LUNGA**
Bird Beak plier Angle LONG



Ergoplus EI-190
Pinza de la Rosa Concava / Convessa
De la Rosa plier concave / convex



Ergoplus EI-110
Pinza a becco di uccello **LUNGA**
Bird Beak plier LONG



Ergoplus EI-200
Pinza togli bande, punta in telfon
Band remover plier with pads, telfon tip



Ergoplus EI-120
Pinza a becco di uccello **CORTA**
Bird Beak plier SHORT



Ergoplus EI-210
Pinza togli brackets, punta in telfon
Brackets remover plier with pads, telfon tip



Ergoplus EI-125
Pinza Concava/Convessa a becchi stretti
Concave / convex plier with narrow beaks



Ergoplus EI-220
Pinza togli brackets, **PUNTA STRETTA**
Brackets remove plier NARROW TIP



Ergoplus EI-240

Pinza per bande

Band plier



Ergoplus EI-330

Pinza per formare angoli retti su fili Ni-Ti e Acciaio

*Plier for right angles
(Ni-Ti Stainless Steel)*



Ergoplus EI-250

Pinza Weingart

Weingart Plier



Ergoplus EI-340

Pinza Jarabak per piegare fili con diametro sottile

Jarabak plier for thin wires bending



Ergoplus EI-265

Pinza di How curva, PUNTA SMALL

How curved plier, SMALL TIP



Ergoplus EI-350

Pinza per formare stop simmetrici a "V"

Plier for "V" stop



Ergoplus EI-275

Pinza di How dritta, PUNTA SMALL

How straight plier, SMALL TIP



Ergoplus EI-360

Pinza per separatori radiopachi

Radiopaque Separator plier



Ergoplus EI-290

Pinza per Omega Loop a torretta

Omega Loop plier



Ergoplus EI-580

Pinza di Mathieu, posizionamento legature

Mathieu ligature positioner



Ergoplus EI-300

Pinzetta di Yang

Yang plier



Ergoplus EI-633

Pinza per ganci chirurgici

Surgical Hooks plier



Ergoplus EI-320

Pinza per formare stop

Plier for stop shaping



Ergoplus EI-640

Pinzetta dritta per attacchi

Brackets straight plier

PINZE DA LABORATORIO / LABORATORY PLIERS



Ergoplus EI-015

Tronchesino per fili pesanti da laboratorio

Laboratory Heavy duty cutter



Ergoplus EI-365

Pinza per creare Omega su archi extraorali da laboratorio

Laboratory pliers to create Omega if extraoral arches



Ergoplus EI-087

Pinza di Adams da laboratorio

Laboratory Adam's plier



Ergoplus EI-510 inserti TC

Pinza Universale, per tagliare fili e ganci da laboratorio

Laboratory Universal Plier, for hooks and wires cutting



Ergoplus EI-305

Pinza di Young per fili pesanti da laboratorio

Young plier for laboratory heavy wire



Ergoplus EI-520

Pinza UNIVERSALE da laboratorio

Laboratory UNIVERSAL Plier

EASYFORM

Termoformatrice



Evolution

Pinze / Pliers